

Headwater Hikes

The Alton Grange Alton

The Alton Grange is a provincially significant wetland and has been described by Credit Valley Conservation as “one of the few remaining areas along the Upper Credit with large, intact riparian wetlands”.

A wide variety of vegetation dominates different areas. In the elevated area inside the circular trail shown overleaf, it's red pine. Below the trail, where it's wetter, it's black spruce. And as you traverse the boardwalk through the forest swamp, where it is wetter still, the spruce gives way to cedar.

In all areas except the wetlands, Alton offers a dazzling array of sedges, lichen, and ground-cover such as partridgeberry, as per the photo overleaf.

Wetlands provide multiple ecological services in our watersheds. They store water, buffering flow that might otherwise present downstream flooding and/or erosion.



They also nurture more than 30% of the species in Canada, providing full-time habitat or niche roles for breeding or feeding. And they contribute significant aspects to water quality and chemistry, including nutrients, organic material, and sediment.

While humans may be inconvenienced by the bugs in wetlands, constituting a hint about what to wear on any hike from the spring through late summer, they provide an important nursery for Ontario's biodiversity and the health of our watersheds.

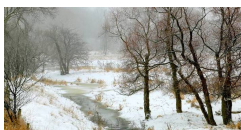
Local Partners:

- ♦ Alton Grange Association
- ♦ Credit River Alliance

Headwater Hikes is an OHI project sponsored by The Friends of the Greenbelt Foundation



Possibility grows here.



OHI Headwater Hikes—ALTON GRANGE

Location

Corner of Cardwell and Station Streets, Alton, Ontario

Map Search

Alton, Caledon, Ontario

Watershed

Upper Credit River. For general information, see <http://www.creditvalleyca.ca/>.

Hike Type and Length

Single use trail for hikers.

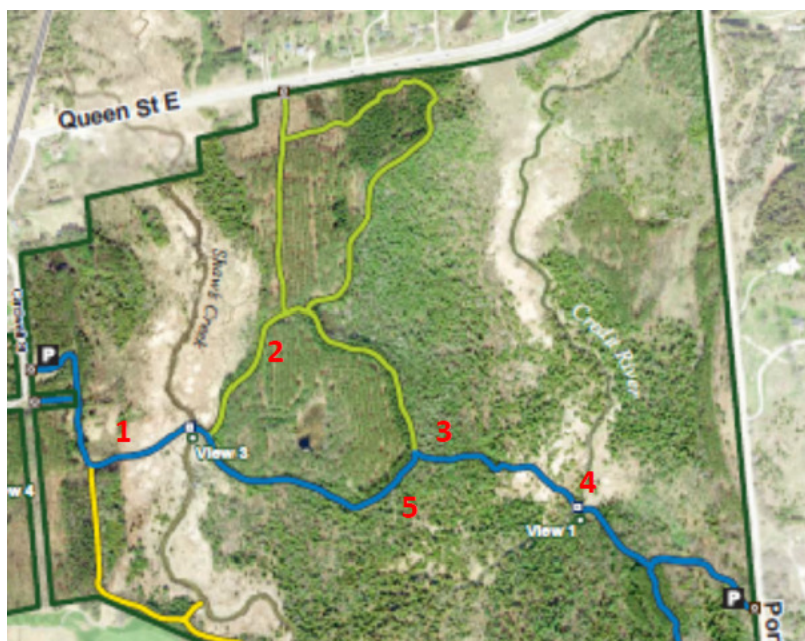
Headwater Hike suggested below is around 90 minutes.

Rating

Easy trail, but long sections on boards through wetlands on each side of the second bridge may be slippery, even in dry weather. You'll need footwear with a good tread.

MAP AND DIRECTIONS

1. Follow the trail from the parking lot across the valley floor to the bridge.
2. Bear left on the trail that circles the elevated centre of the area, ignoring for now the two trails off to the left. Note the black spruce on your left, the red pine on your right, and the high variety of ground-covers, including sedges, lichen, and partridgeberry, below.
3. Halfway around the circle, bear left again and begin balancing on the boardwalk, below, that represents an amazing amount of work as it carries you through the forest swamp. Watch as the black spruce gives way to cedar.
4. Note your time at the second bridge. Continue on or begin heading back to the parking lot, as you prefer.
5. Heading back, turn left onto the circular trail, left again, then right to return to the parking lot.



Please read the Safety Guidelines and Disclaimers at
www.ontarioheadwaters.ca/Hikes/Safety.

Contact: Andrew@ontarioheadwaters.ca

416 231 9484



Possibility grows here.