



Headwater Hikes

McMichael Canadian Art Collection / Granger Greenway Kleinburg

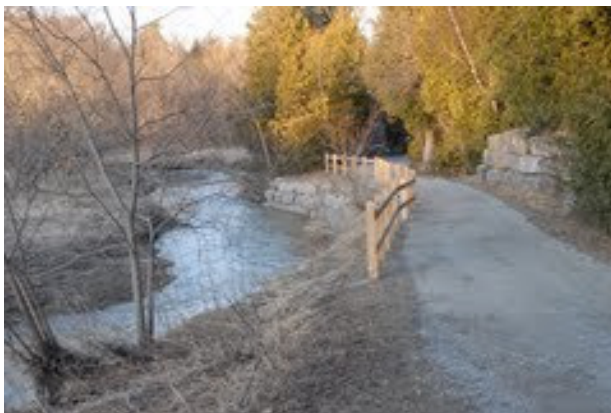
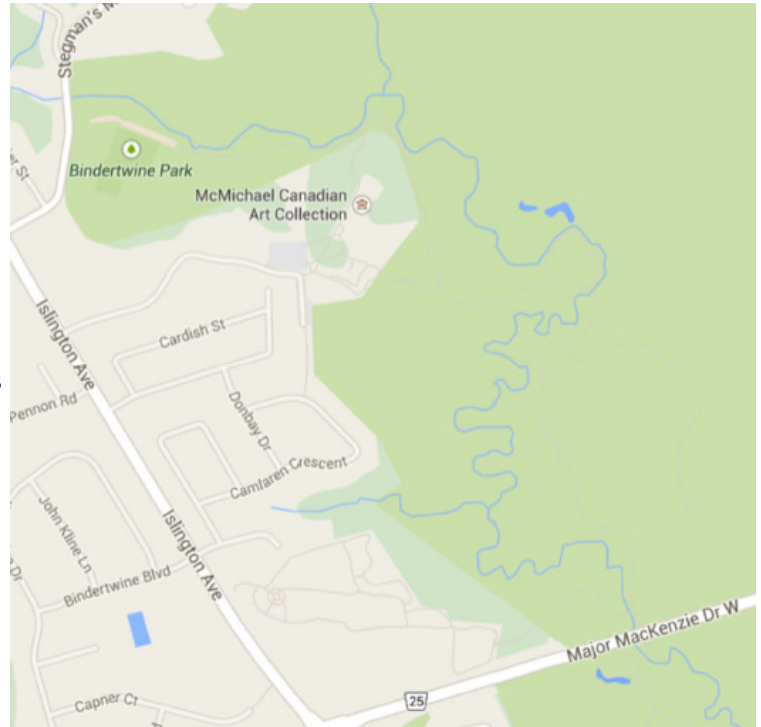
The McMichael and the Granger Greenway offer both a Headwater Hike and a cycle activity along a second-order stream in the upper reaches of the Humber, a Canadian Heritage River.

The valley corridor in this location is atypical of most second-order streams: it is much broader due to the volume of glacial run-off over 10,000 years ago, in a huge watershed.

As a result, this Hike demonstrates how a stream can meander across its flood-plain; where it forms pools and riffles in the water; where ephemeral streams and wetlands collect in the spring; and where the scale of the valley and its variety of soils allow a wide diversity of plants and animals to thrive.

Plant communities here find their niches in small forests, wetlands, meadows, and along the stream bank.

Wildlife ranges from butterflies and amphibians through hummingbirds and great blue herons, to rabbits, squirrels, fox, deer, and coyote. And while you may not see a beaver, you will see a lot of their handiwork in the Greenway.



Although in the midst of urban development, be aware there are no lights nor washrooms in the Greenway, for which ambitious plans include connections both south to Lake Ontario and north to the Trans-Canada Trail.

While there is a \$5.00 fee at the gallery's parking lot, this could be weighed against the opportunity to visit the 10-acre sculpture garden, Tom Thomson Shack, the café, gift shop, and McMichael cemetery, featuring six of the original members of the Group of Seven. In addition, consider visiting the Gallery. There is an entrance fee, but the splendid artwork relates strongly to the natural, outdoor theme of the day.

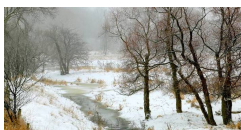
Headwater Hikes is an OHI project sponsored by The Friends of the Greenbelt Foundation



Possibility grows here.

Local Partners:

- ◆ **McMichael Canadian Art Gallery**
- ◆ **Toronto and Region Conservation**

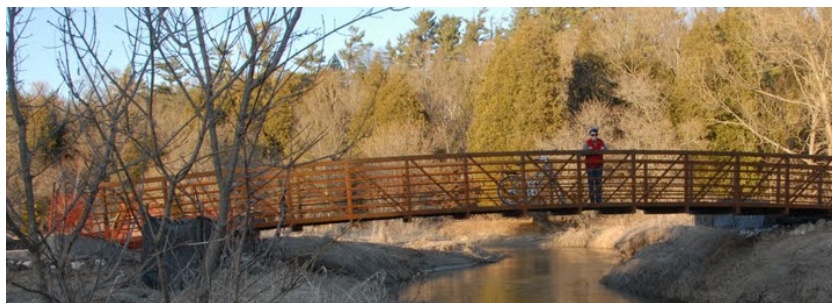


OHI Headwater Hikes—McMICHAEL and the GRANGER GREENWAY

Location	10365 Islington Ave, Kleinburg, Ontario, L0J 1C0
Map Search	McMichael Canadian Art Collection
Watershed	Main Humber sub-watershed of the Humber River. See http://trca.on.ca/the-living-city/watersheds/humber-river/#sthash.SXrwWlQq.dpbs
Hike Type and Length	Hike is on a multi-use 3m pathway, suitable for wheelchairs but with several steep access points not all of which are suitable for wheelchairs. Suggested Hike is about 2 hours; cycling option 2.5.
Rating	Relatively smooth trail, but we recommend good footwear for steep access points and side trails.

MAP AND DIRECTIONS

1. Our recommended Hike starts at the McMichael Canadian Art Collection, with an exploration of the outdoor sculpture garden.
2. To access the valley, make your way to the trail on the North side of the gallery.
3. Once into the ravine, there are many features to see. Note how the stream meanders across the valley floor, the pocket wetlands, the changes in vegetation based on deposited soils and other conditions - all examples of the different eco-zones that support the diversity of plants and animals in headwater areas and form the base of the food chain for what's downstream.
4. Turn back at or before you get to Major Mackenzie Drive.
5. On the way back, take the pathway up the hill on the South side of the gallery, turning back to catch a few great views of the valley from this trail.



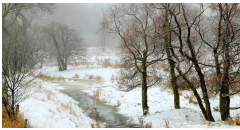
One of the several bridges in the Humber valley, from which aquatic species and the river's natural processes can be seen.

Please read the Safety Guidelines and Disclaimers at
www.ontarioheadwaters.ca/Hikes/Safety.

Contact: Andrew@ontarioheadwaters.ca 416 231 9484



Possibility grows here.



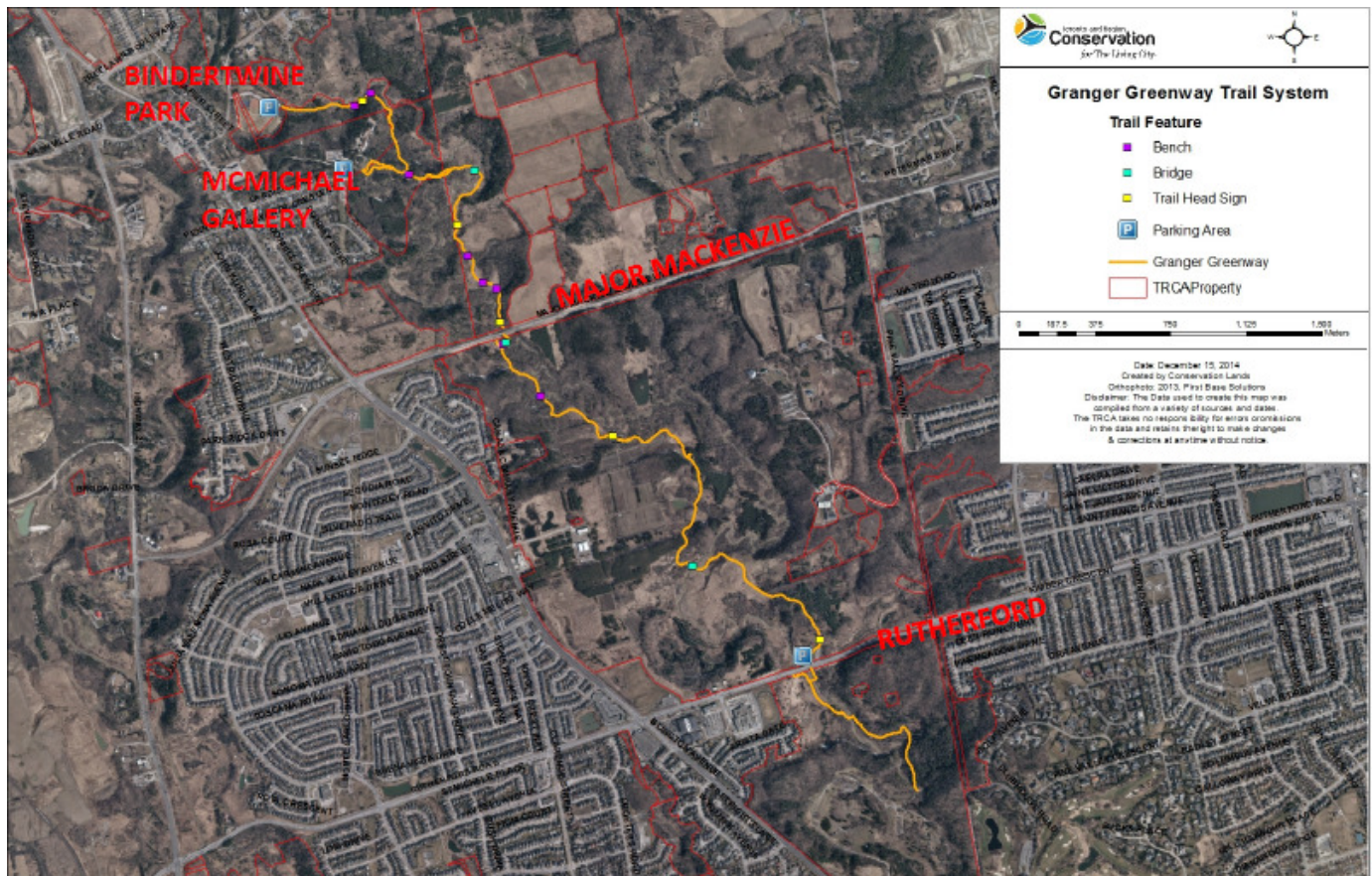
OHI Headwater Hikes—McMICHAEL and the GRANGER GREENWAY

ALTERNATE ACTIVITY: CYCLING THE GRANGER GREENWAY

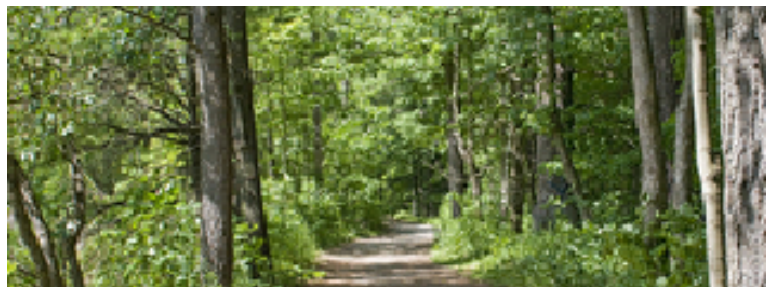
Head to Bindertwine Park—B on the map above or as noted below. Access the valley directly or head over to the McMichael to visit the outdoor sculpture gallery. If you head to the McMichael, be careful descending the hill to the left of the Gallery as it is very steep. Once in the floodplain, enjoy the points of interest on the previous page.

Continuing South, you can cross underneath Major Mackenzie. One fork of the path heads West to Canada Company Avenue, but we suggest you push South to where the trail curves around the eastern edge of the TRCA nursery lands at Boyd. Rutherford is a good turn-around point, but if you want you can cross underneath and cruise to the end of the trail.

This whole reach of the Humber consists of second-order streams until South of Major Mackenzie, and remains a third order stream from there as far as you can take the Greenway.



While parts of the Granger Greenway are within sight of the Humber, others are in streamside areas such as this forest, which performs important habitat, infiltration, and other ecological functions.



Please read the Safety Guidelines and Disclaimers at
www.ontarioheadwaters.ca/Hikes/Safety.

Contact: Andrew@ontarioheadwaters.ca

416 231 9484



Possibility grows here.